

## How do scientists know the woolly mammoth lived and went extinct on Earth?



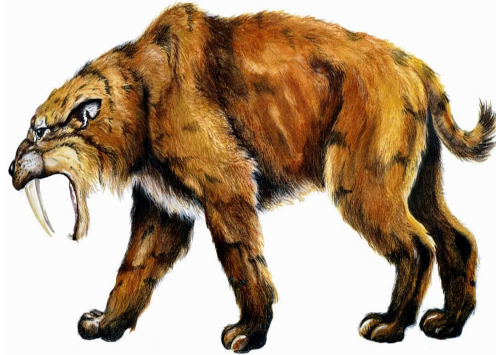
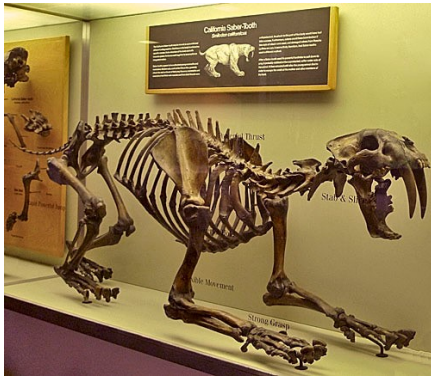
How can scientist determine what species it is related to?

By comparing bone structure and DNA.

Common Ancestor



**How do scientists know that saber-toothed tiger lived and went extinct on Earth?**



How can scientist determine what species it is related to?

By comparing bone structure and DNA.

Common Ancestor



